

TRL Bearer Bar Assembly Instructions



Attention : Assembly of all Bearer Bars must be carried out before use of the Trade Roof Ladder. Follow the assembly instructions provided below.

To assemble the Bearer Bars to the roof ladder you will require the following tools;

- 2 x 10mm Spanners

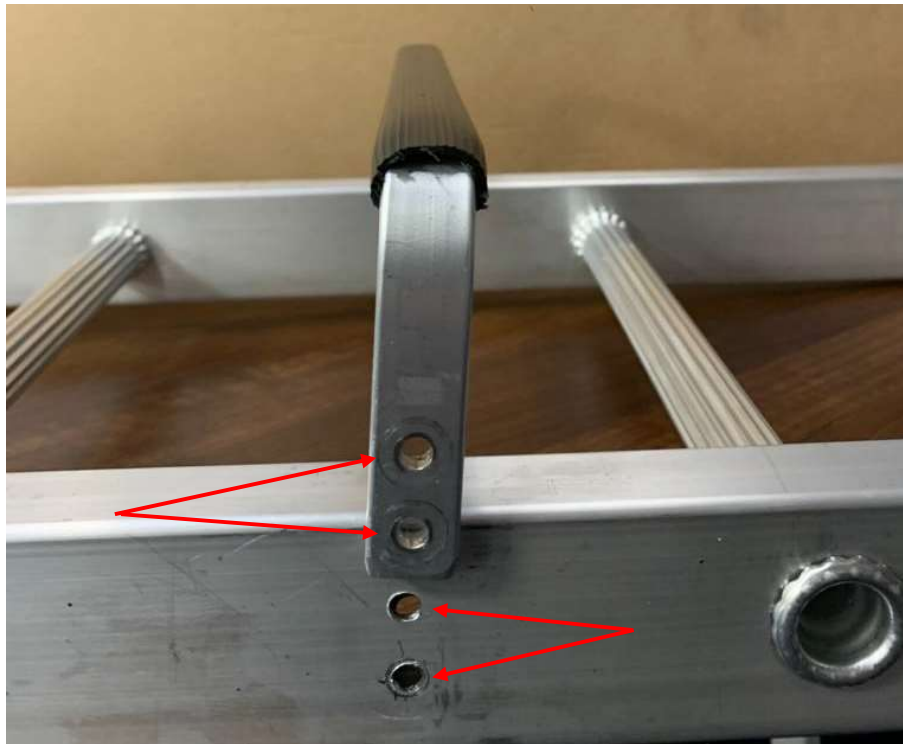
The roof ladder will be supplied with the correct number of bearer bars required for the size of TRL purchased.

Every bearer bar will require the following fixings that have been supplied to securely fix to the roof ladder;

- Bearer Bar (x1)
- M6 x 40mm Hex Head Bolt (x4)
- M6 Nylock Nut (x4)
- Washer (x4)



Step 1 - Locate the pre-drilled holes on each side of the roof ladder and place one bearer bar over each end of the ladder stile. Align the holes of the bearer bar with the pre-drilled holes to allow the bolt to be placed through. Please see photograph below;



Step 2 - Place 2 M6 x 40mm Bolts through the bearer bar and ladder stile. Repeat this process on each side of the ladder, 4 bolts in total per bearer bar. Please see photograph below;



Step 3 – On the inside edge of the ladder, place 1 washer on each end of the M6 x 40mm bolt and then place the M6 nylock nut on each threaded end of the bolts. (4 in total per bearer bar). Please see photograph below;



Step 4 – Using 2 10mm spanners (not supplied), place a spanner on each end of the nut and bolt and tighten. Be mindful not to over tighten. Tighten all 4 nuts and bolts and check that the bearer bars are not loose and do not move. Please see photograph below;



Step 5 – Repeat Steps 1 to 4 for each Bearer Bar provided. Ensure that all bearer bars are assembled correctly before using the roof ladder.

Please contact Sales/Customer Services where an instructional video can be provided upon request. Please contact sales@lyteladders.co.uk or call On 01792 796666.